

PAGE 1

MATERIALS:

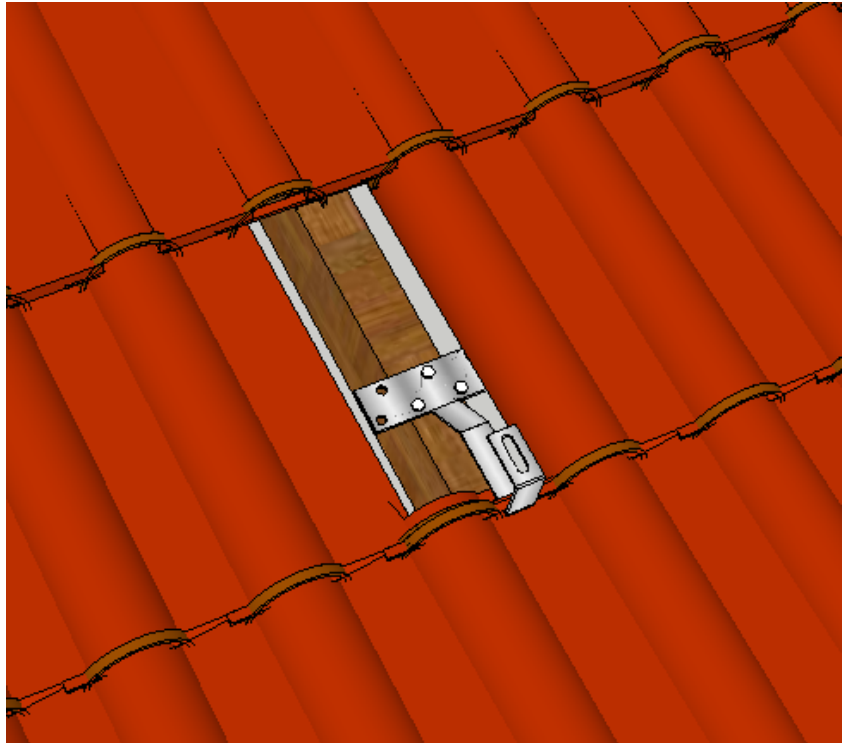
- BOLT 6,3X100
- BOLT M10X25
- NUTS M10

STEP 1

- PLACE THE BRACKETS FOR TILED ROOF AND SECURE THEM WITH THREE SELF DRILLIED SCREWS 6.3X100
- COMPUTABLE DISTANCE BETWEEN BRACKETS IS 0,80 METERS AND MAXIMUM ALLOWED IS 1.20 METERS

ASSEMBLY INSTRUCTIONS:

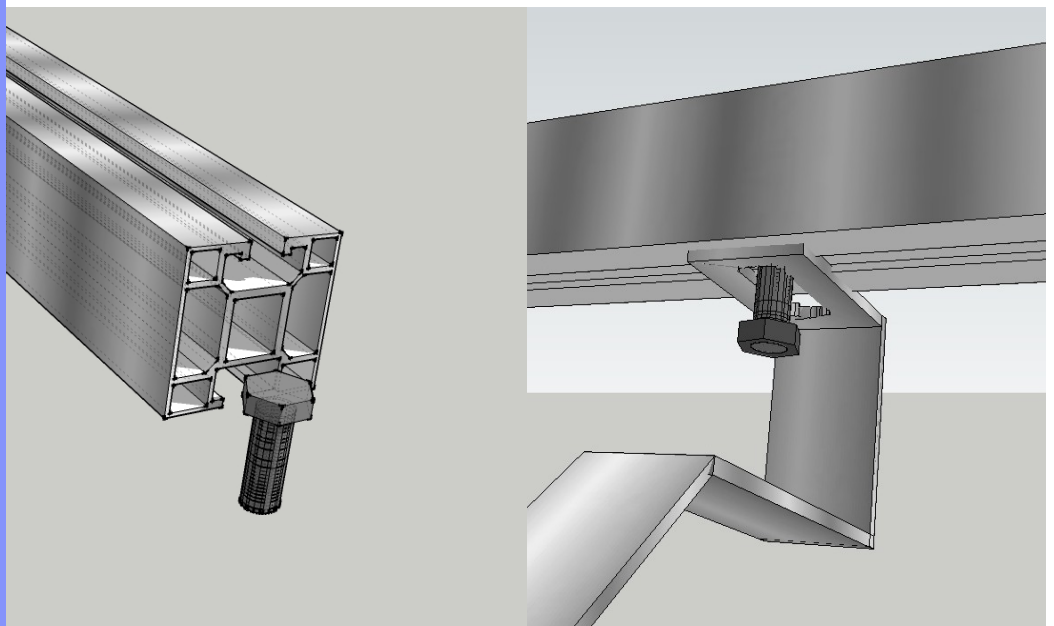
STEP 1



STEP 2

- SET THE BOLTS M10X25 INTO THE PROFILE CHANNEL 40X40 AND SECURE THEM ON THE BRACKETS.

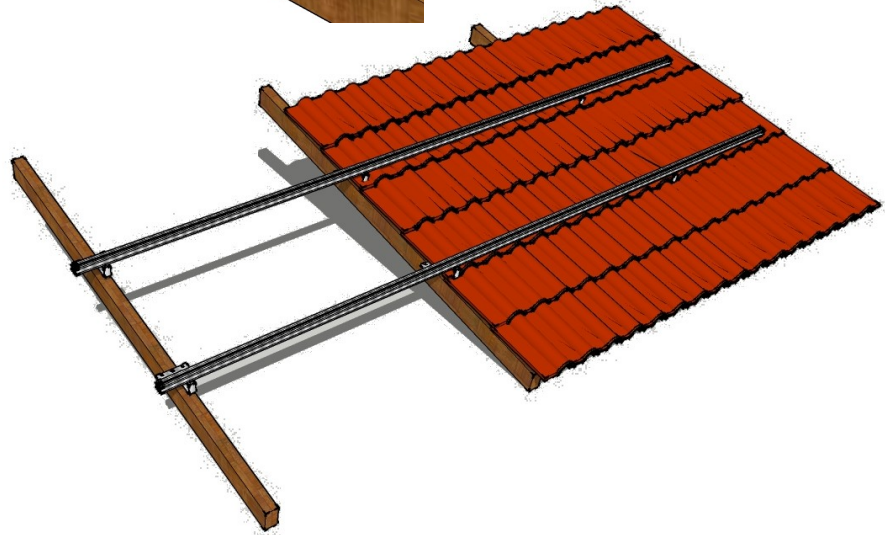
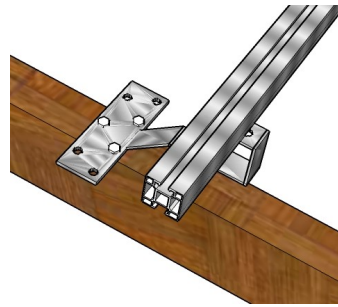
STEP 2



STEP 3

- TO INSTALL THE BASE FASTEN IT WITH THREE BOLTS 6.3 X 100 AND THEN REPLACE THE TILES .

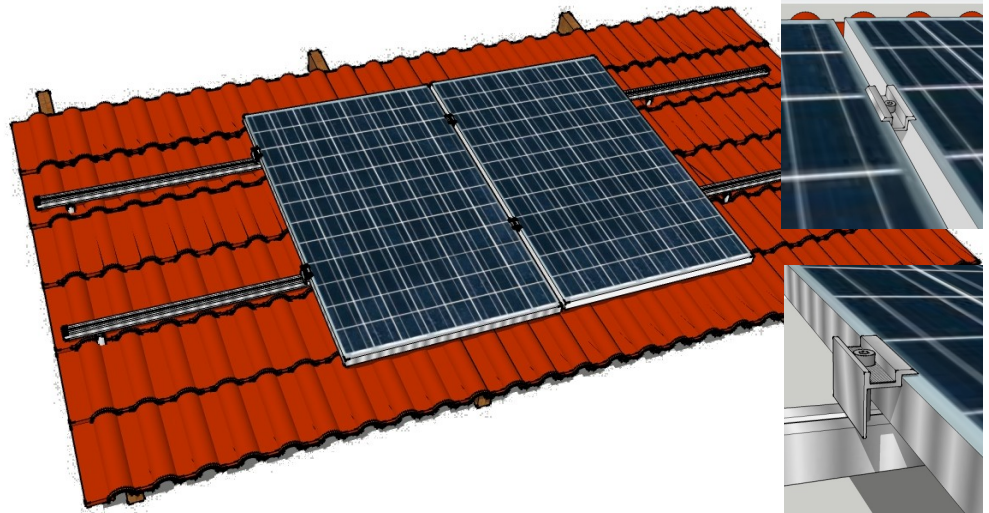
STEP 3



STEP 4

- AT THE END PLACE THE PANELS ON THE PROFILES 40 X 40 AND SECURE THEM WITH THE RESPECTIVE COMPONENTS (END AND MIDDLE CLAMPS—STEP 4).

STEP 4



Athens

4 Gizi, Marousi GR
Postal Code 151 25 Tel: +30
210 6859011 Fax: +30 210
6859012

Thessaloniki

58 Voulgari,
GR Postal Code 542 49
+30 2310 327 914
Fax: +30 2310 325 693

Service - Logistics

4th Street (Industrial Area), Lakoma GR
Postal Code 630 80 Tel: +30
23990 510 28 Fax: +30 23990
510 07

www.ecosun.gr
info@ecosun.gr